

Cutter Guide: A4-GC3

Finished Size: 305mm x 216mm

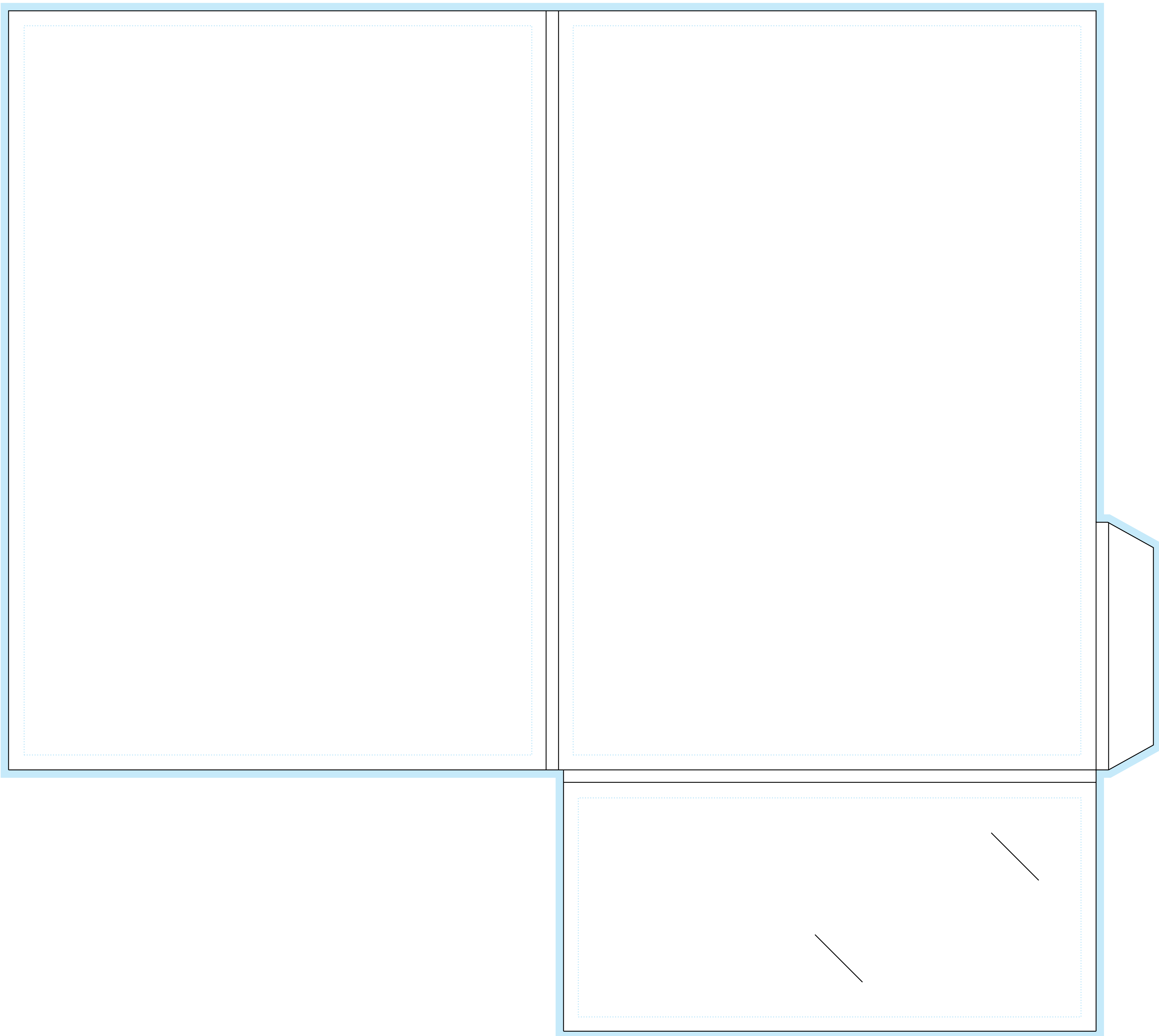
5mm Capacity

Flat Size: 460mm x 410mm

— Trim and Fold lines – Finished trim and fold outline

■ Bleed area – Extend any colour or images 3mm
Into this area. This will be trimmed away

⋯ Safe area – All text should be kept within the safe area



INNER