

Cutter Guide: A4-GC8

Finished Size: 305mm x 216mm

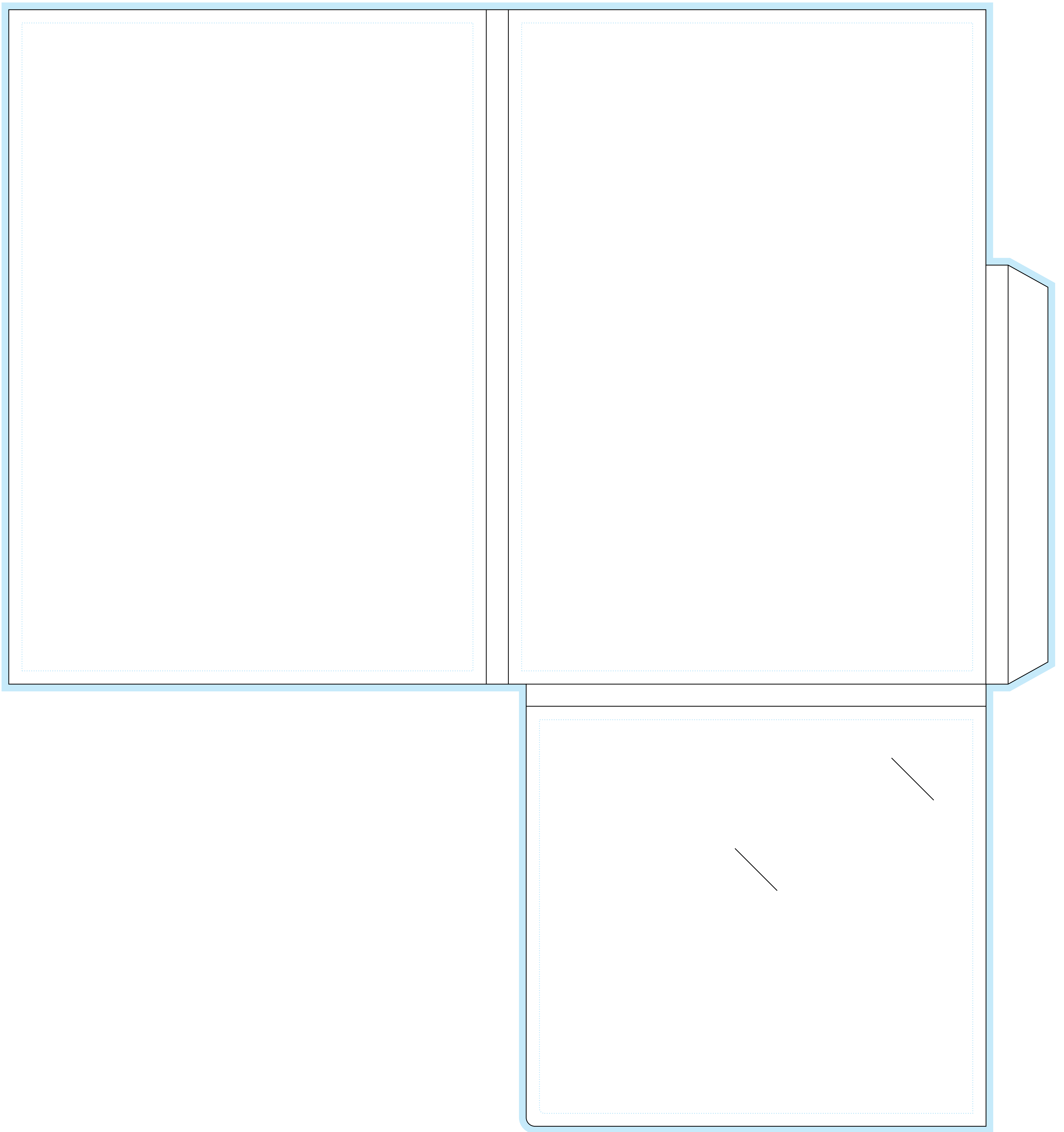
10mm Capacity

Flat Size: 470mm x 505mm

— Trim and Fold lines – Finished trim and fold outline

■ Bleed area – Extend any colour or images 3mm
Into this area. This will be trimmed away

⋯ Safe area – All text should be kept within the safe area



INNER