

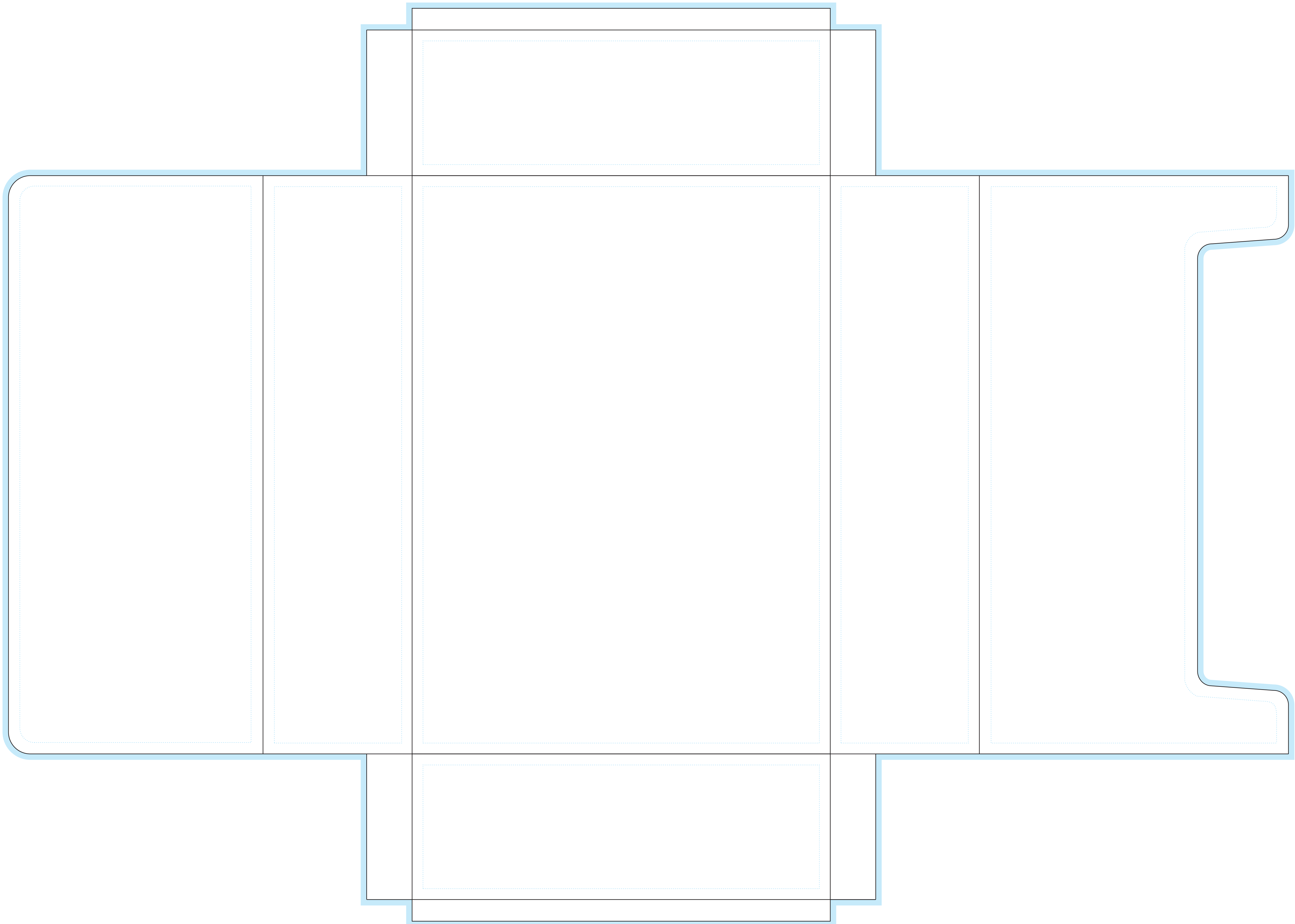
Cutter Guide: A4-GC25

Finished Size: 230mm x 318mm

80mm Capacity

Flat Size: 704mm x 502mm

- Trim and Fold lines – Finished trim and fold outline
- Bleed area – Extend any colour or images 3mm Into this area. This will be trimmed away
- ⋯ Safe area – All text should be kept within the safe area



INNER