

Cutter Guide: A4-GC23

Finished Size: 220mm x 310mm

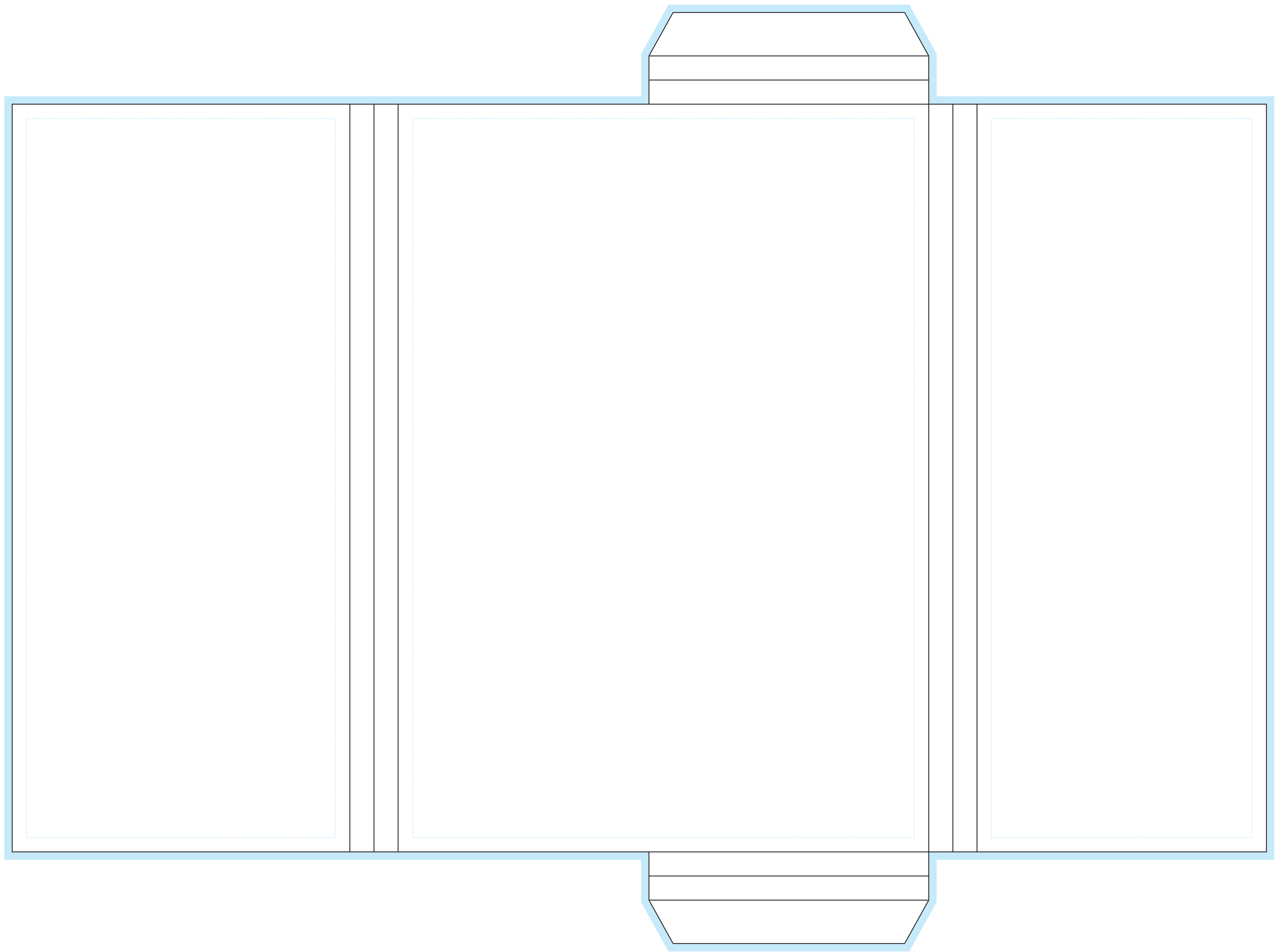
20mm Capacity

Flat Size: 520mm x 386mm

— Trim and Fold lines – Finished trim and fold outline

■ Bleed area – Extend any colour or images 3mm  
Into this area. This will be trimmed away

⋯ Safe area – All text should be kept within the safe area



INNER