

Cutter Guide: A4-GC21

Finished Size: 310mm x 218mm

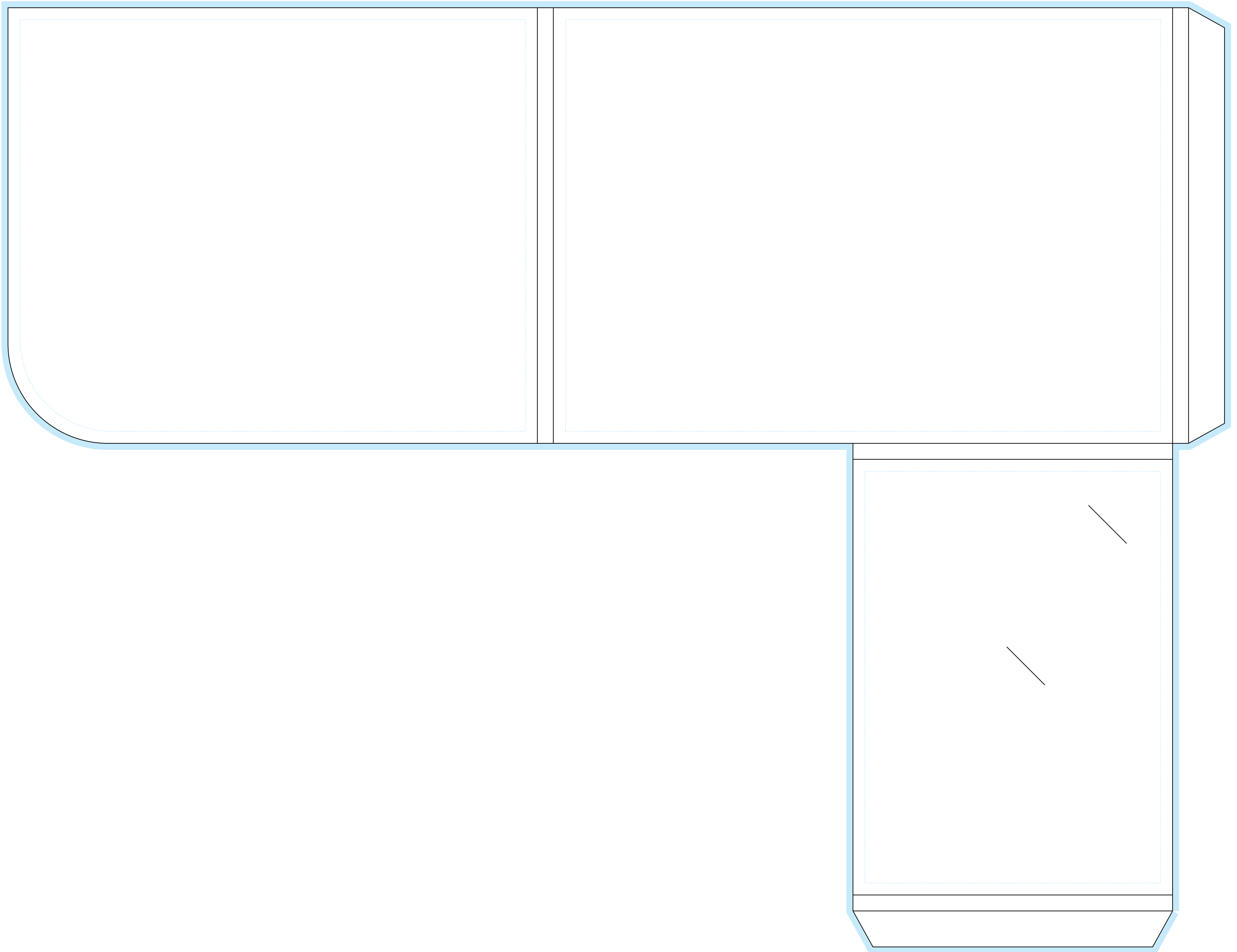
8mm Capacity

Flat Size: 609mm x 470mm

— Trim and Fold lines – Finished trim and fold outline

■ Bleed area – Extend any colour or images 3mm into this area. This will be trimmed away

⋯ Safe area – All text should be kept within the safe area



INNER